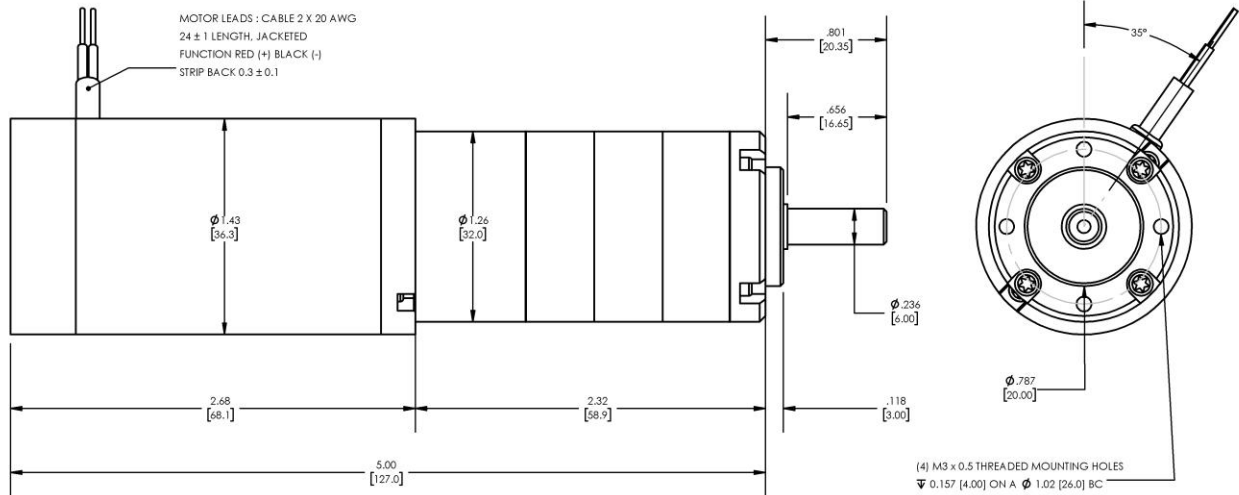


**Model Number:**
**MMP TM36-268G-36V GP32-130**


DIMENSIONS ARE INCHES [MM] UNLESS OTHERWISE STATED

PLANETARY GEARMOTOR OUTPUT PARAMETERS:	VALUE	UNITS	TOLERANCE
Gearhead Ratio (exact)	129.62 : 1		
Gearhead Shaft Output Speed (at full-load)	25	RPM	MAX
Gearmotor Rated Continuous Torque	17	In-Lbs	MAX
Gearmotor Rated Peak Torque	<b>46++</b>	In-Lbs	----
Gearhead Standard Backlash	96	Arc Minutes	MAX
Gearhead Efficiency	70%	----	----
Output Shaft Radial Load Capacity	23	Lbs	MAX
Output Shaft Axial Load Capacity	7	Lbs	MAX
Gearmotor Total Weight	1.2	Lbs	MAX

**++ All Peak Torque values are dependent upon duty. Contact our sales office for details.**

DC MOTOR PERFORMANCE PARAMETERS:	VALUE	UNITS	TOLERANCE
Rated DC Voltage	36	DC VOLTS	----
Rated Continuous Current	0.40	AMPERES	----
No-Load Speed	4800	RPM	MAX
Rated Speed	3216	RPM	+/- 15%
Rated Continuous Power Out	7	WATTS	+/- 15%
Rated Continuous Torque	3.0	OZ-IN	----
Peak Torque (motor only)	8.2	OZ-IN	----
No-Load Current	0.10	AMPERES	MAX
Back EMF Constant (Ke)	7.5	V/KRPM	+/- 10%
Torque Constant (Kt)	10.1	OZ-IN/AMP	+/- 10%
DC Armature Resistance	29.67	OHMS	+/- 15%
Armature Inductance	10.28	mH	+/- 15%
Armature temperature	155	DEG. C	MAX

**NOTES:**

- ENCODER & BRAKE OPTIONS AVAILABLE – [FOLLOW THIS LINK FOR DETAILS](#)
- NEMA MOUNTING FLANGE OPTION AVAILABLE – [FOLLOW THIS LINK FOR DETAILS](#)

**MIDWEST MOTION PRODUCTS, INC**
**DESIGN, MANUFACTURING & DISTRIBUTION - MOTION CONTROL EQUIPMENT**
[www.midwestmotion.com](http://www.midwestmotion.com)

 email: [sales@midwestmotion.com](mailto:sales@midwestmotion.com)